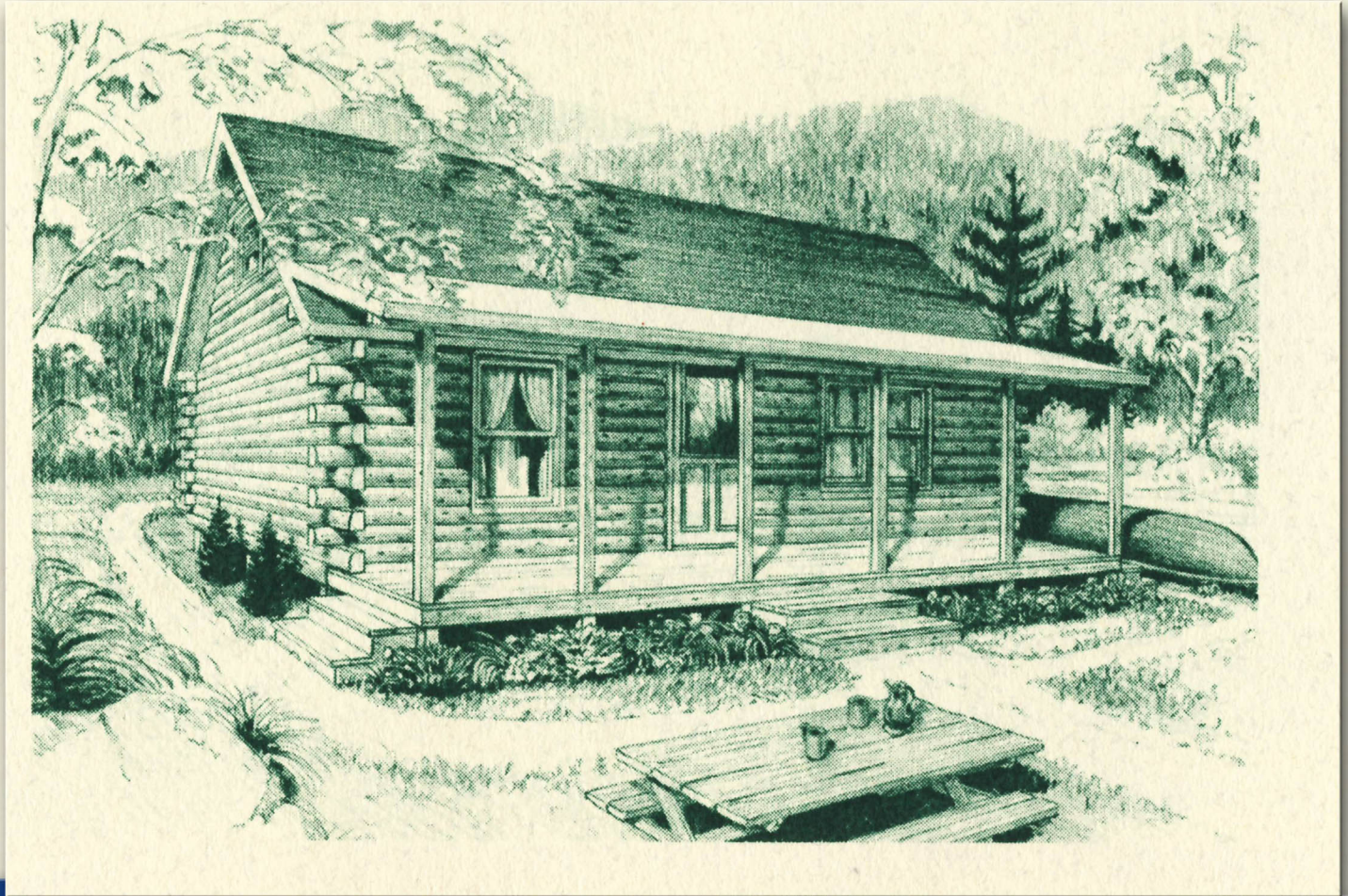




The River Bend



Northeastern Log Homes
info@northeasternlog.com 800-624-2797 www.northeasternlog.com

*Artist's rendering, photography and optional design ideas may vary from the standard model. Please always consult the standard floorplan and refer to the Camp and Cabin material list as to what is included.



The River Bend

Camp & Cabin Series

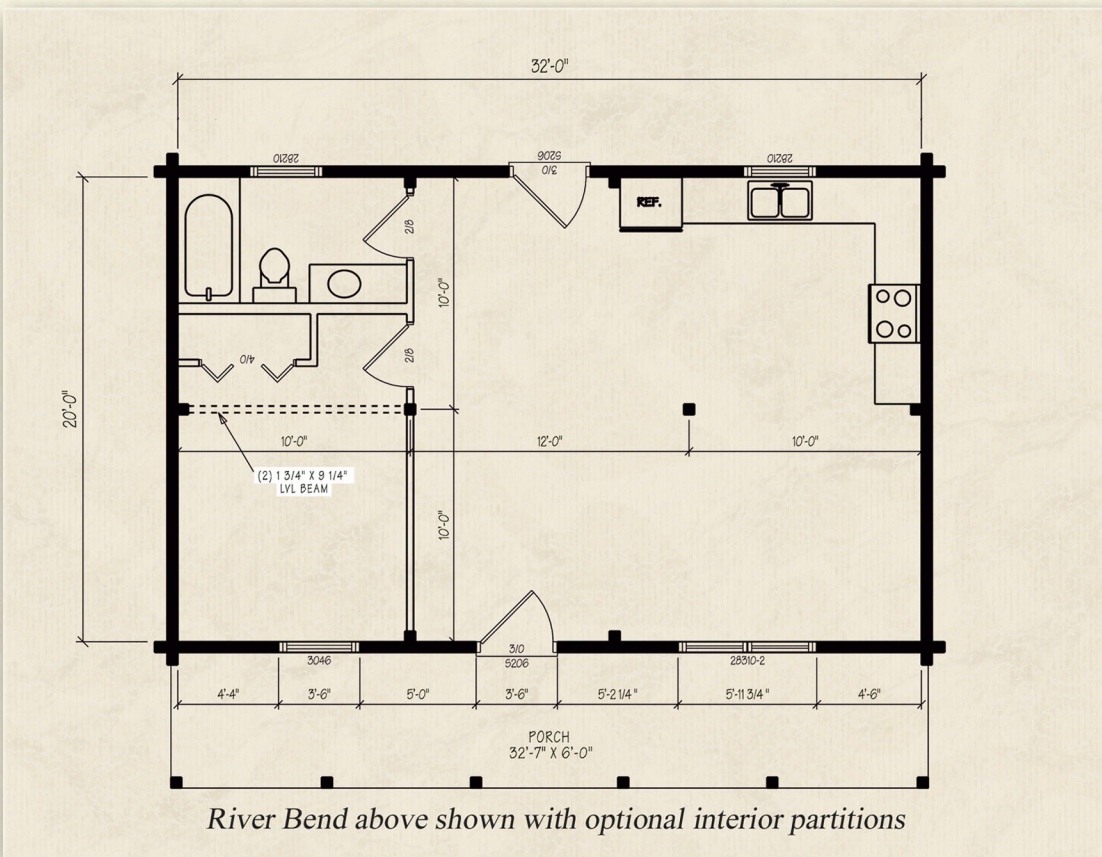
20' x 32' Size

837 Square Feet

One/Two Bedrooms

One Full Bath

The River Bend has a full cathedral ceiling on the entire second floor and open to below area via rafters & ridge beam. Knotty pine v-match sheathing is available as an option. The 1st to 2nd floor area is done via regular framing with knotty pine v-match optional for the 1st floor ceiling. Consult the Camp & Cabin material list for full details & optional material available



River Bend above shown with optional interior partitions

Optional Design Ideas:

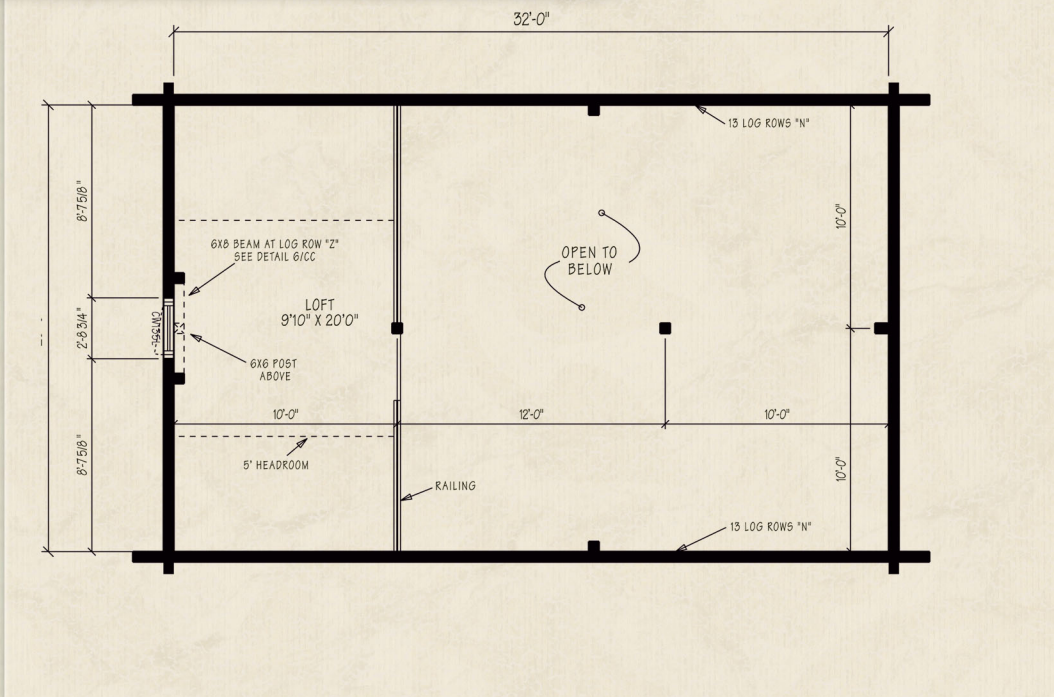
Grow the loft by 2' from 10' to 12' making a larger bedroom and more substantial sleeping loft area

Add a full "L" shaped staircase for loft access (will require 2 additional log rows)

Enlarge the front porch from 6' to 8' to gain terrific outdoor living area

Add windows to the right or left sides to take advantage of your view!

Both the cathedral ceiling on the second floor loft and open to below area done via rafter and ridge beam. You can add optional knotty pine v-match for beautiful sheathing

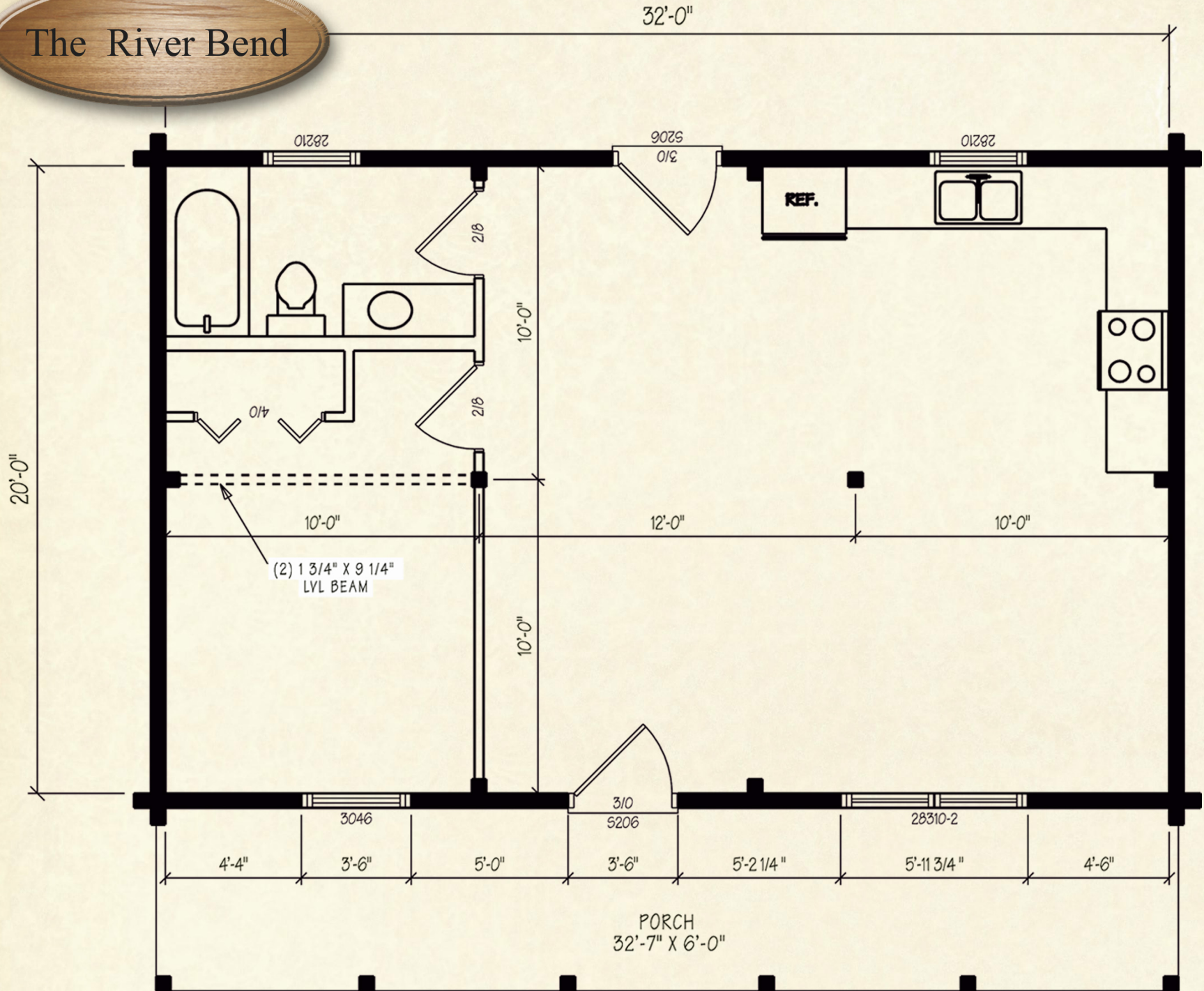


Northeastern Log Homes

info@northeasternlog.com 800-624-2797 www.northeasternlog.com

*Artist's rendering, photography & optional design ideas may vary from the standard model. Please always refer to the standard floorplan and consult the Camp and Cabin material list as to what is included.

The River Bend



River Bend above shown with optional interior framing

The River Bend

